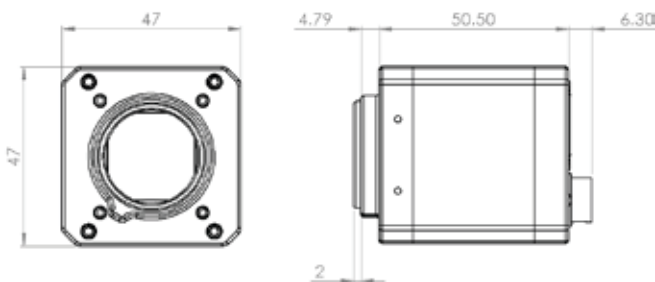


Quantum Efficiency Curve shows > 60% at peak

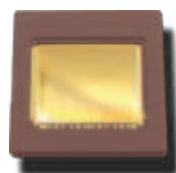
## Technical Specifications

Camera	Specifications
Sensor Resolution	1280 × 1024 Pixels
Sensor Pixel Pitch	9.7 μm × 9.7 μm
Sensor Well Capacity	> 25000 e-
Sensor Dynamic Range	> 60 dB
Sensor Read Noise	< 4e- median (60 fps mode)
Sensor Quantum Efficiency	> 60% at peak at 600nm
Frame Rate	> 55 Hz in 10 bit Mode, > 90 Hz in 8 bit Mode
Sensor Image Lag	< 0.1%
Sensor Shutter Mode	Rolling
Features	
On-Screen Display	Full on-screen display capability with text, standard geometrical shapes and graphics
Image Correction	Bad pixel replacement and 2 points non-uniformity correction (NUC)
Gain Control	Automatic gain and exposure control or manual
Snapshots	On-board capture of *.JPG (8b) or *.PGM (8/10b)
Digital Zoom	Up to 8X (0.001 increment resolution)
Contrast Enhancement	Contrast stretching, equalization and adaptive equalization
Housing	
Lens Mount	CS-mount
Dimensions (excluding connectors) (Width × Height × Depth)	47 × 47 × 57.3 mm
Weight	< 180 g
Input/Output	
Digital Video Output	10/8-bit Gigabit Ethernet
Communications	RS-232 or Ethernet (RJ-45)
Synchronization	Frame start trigger (2 to 12 V) Analog output strobe reference (2 to 12 V)
Environmental and Power	
Operating Temperature	0° C to +45° C
Storage Temperature	-50° C to +80° C
Input Voltage	+5 to +15 VDC (External Power Supply Needed)
Power	< 4 W (typical)



Mechanical Dimensions for GV Camera Body (in mm)

NOCTURN GV Camera is powered by the Lynx CMOS imaging sensor, optimized for low light level imaging.



The Lynx CMOS imaging sensor is the first operational sensor specifically designed with Night Vision, Homeland Security and Surveillance applications in mind.

This fully solid-state CMOS sensor provides excellent imaging across varying light conditions, from daylight to low-light levels - such as those found during a quarter-moon.

The Lynx CMOS imaging sensor provides full SXGA resolution at 100 frames per second, with < 4e- read-out noise and without cooling.

# PHOTONIS

## NOCTURN

### Product Contact

**PHOTONIS USA, Inc.**  
6170 Research Road - Suite 208  
Frisco, TX 75033 United States of America

T. +1 (972) 987-1460  
F. +1 (469) 713 2880  
imaging@photonis.com

# PHOTONIS

For more information please visit [www.nocturncamera.com](http://www.nocturncamera.com)

#### **PHOTONIS Technologies, S.A.S.**

Domaine de PELUS  
Axis Business Park - Bât E  
18 Avenue de Pythagore  
33700 Mérignac France

T. +33 (0)566 16 40 50  
F. +33 (0)566 16 40 62

#### **PHOTONIS France S.A.S.**

Avenue Roger Roncier  
19100 Brive La Gaillarde  
France

T. +33 (0)555 86 37 00  
F. +33 (0)555 86 37 69

#### **PHOTONIS USA Pennsylvania, Inc.**

1000 New Holland Avenue  
Lancaster, PA 17601-5688 United States of America  
[www.PhotonisUSA.com](http://www.PhotonisUSA.com)

T. +1 717 295 2704  
T. 800 366 2875 (toll-free in US and Canada)  
F. +1 717 295 6096

#### **PHOTONIS Netherlands B.V.**

Dwazziewegen 2  
9301 ZR RODEN  
The Netherlands

T. +31 (0)505 01 88 08  
F. +31 (0)505 01 14 56

#### **PHOTONIS USA, Inc.**

660 Main Street  
Sturbridge, MA 01566  
United States of America

T. +1 508 347 4000  
T. 800 648 1800 (toll-free in US and Canada)  
F. +1 508 347 3849